



Custom builder **Mario Causevic** is shaking things up in Lorne Park. His company, **Maki Construction Inc.**, has been building and renovating homes since 1998, but this latest project was for his family, wife Samira and their two children. It exudes curb appeal in spades.

Lorne Park is changing. Older homes are being renewed or torn down to make way for new ones. Young families with fresh ideas are moving in. The exterior of this home boasts classic European influences like stone, a multi-gabled, varied-pitch roofline, turrets, oeil-de-boeuf and stone-soldier pillars flanking the driveway. Trendier elements are also present, like slim muntins on the chocolate Architectural Line Pella windows, a slabbed-stone walkway and pot lighting that showcases the exterior at night. *Continued on page 20*

LORNE PARK

glam

STORY **JOYCE TURNER-GIONET**
PHOTOGRAPHY **JASON HARTOG**





ABOVE: The family room is aglow with a backlit quartzite fireplace surround. **RIGHT:** The piano room is a traditional yet dramatic addition to the main floor. **FAR RIGHT:** Cameo Designer Cristina Farina helped bring the couple's vision to life. **OPPOSITE LEFT:** The foyer is a delight for the senses with a show-stopping custom staircase. **OPPOSITE RIGHT:** Mario and Samira created a home with both beauty and function for their family.



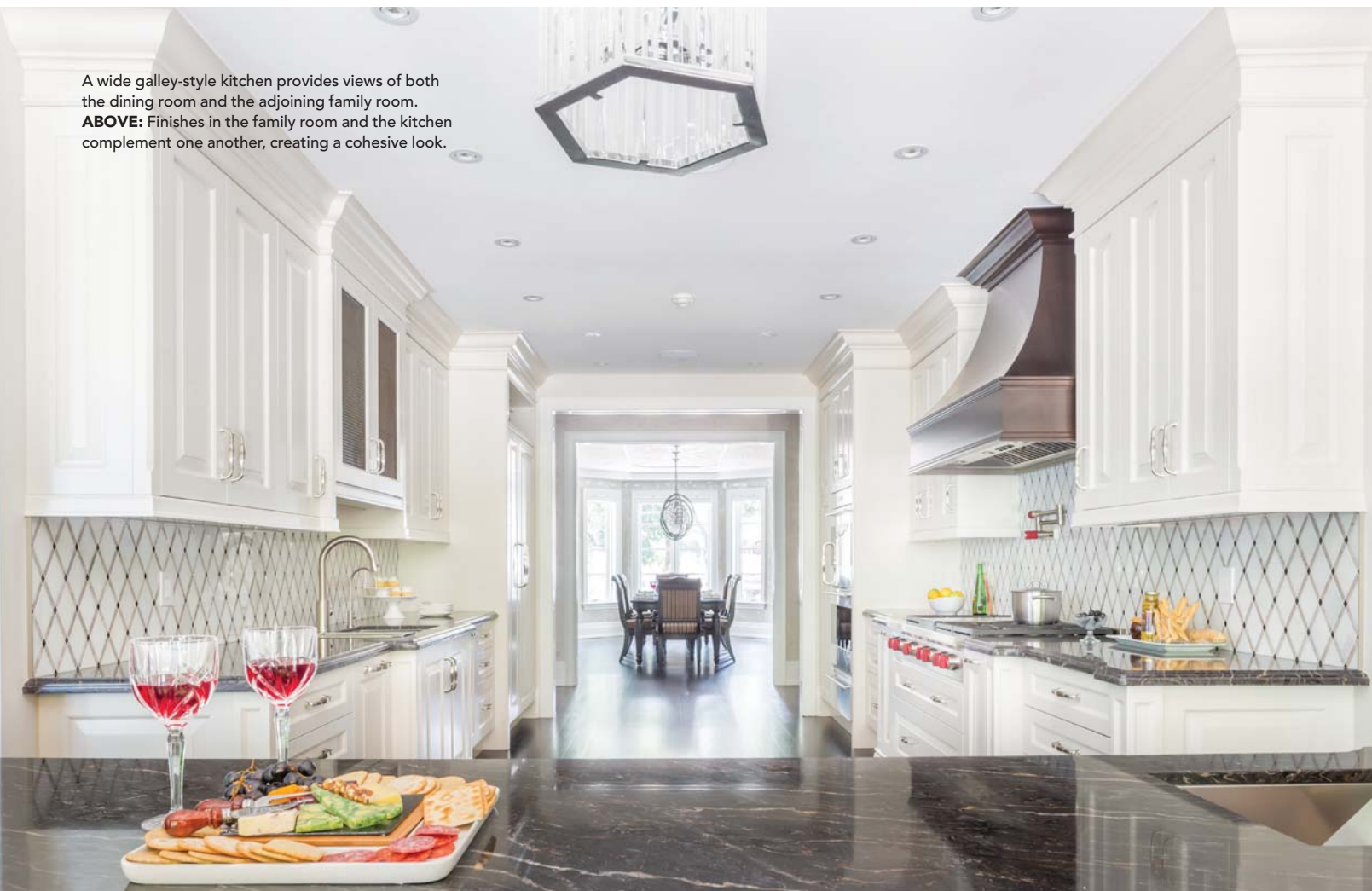


The couple avoided the temptation to centre a table in the large entranceway: “It’s been done,” says Samira. “Let’s do something wow with the floor instead.” The polished Invictus Amber porcelain is alive with movement.

Cameo Kitchens & Fine Cabinetry played a large part in making the house a home. “They can customize everything,” says Mario. The couple spent hours working with Cameo Designer **Cristina Farina** to get the kitchen right. Even thickness of cabinet door rails was manipulated to maintain proportion with the nine-foot ceiling. The diamond backsplash, a mix of marble, was laid vertically to further the illusion of height. From priming to lacquer, the hand-brushed finish on the cabinets was a 19-step process. Built-ins were given a furniture feel with layered crown moulding and decorative panels.

A wide galley-style kitchen provides views of both the dining room and the adjoining family room.

ABOVE: Finishes in the family room and the kitchen complement one another, creating a cohesive look.





LEFT: A large island is the perfect place for an informal meal or after-school snack. **BELOW:** The custom range hood is stained to complement the darker-toned built-ins. **BOTTOM:** A spectacular hand-crafted wall treatment in the dining room is made to look like wallpaper.



The sightline is uninterrupted between the kitchen and formal dining room. “Because of this, the kitchen becomes a somewhat formal space,” says Samira. Formal perhaps, but the couple have young children, so it’s been made friendly and functional too. The Satin Night granite island is the regular homework spot. White chrome chandelier-style pendant lights from Universal Lamp echo the style of the dining room chandeliers. Maple cabinets in the colour Congo offset the linen cabinets; both trimmed with polished nickel. Cristina calls attention to the interplay of traditional raised panel doors against the more transitional shaker style. Decorative wire mesh was used on selected doors instead of glass.

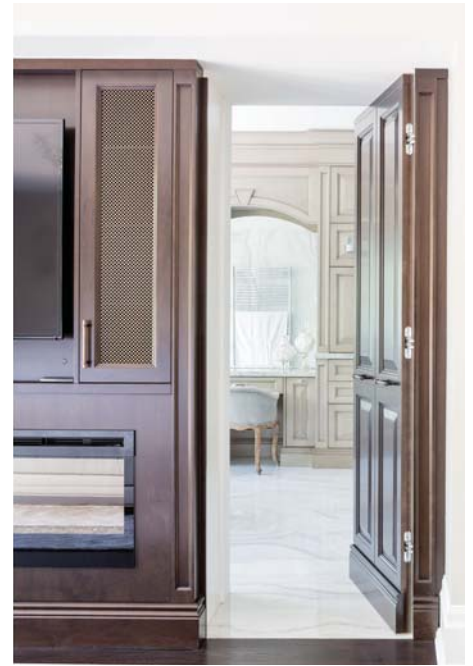
Floors are custom-stained, five-inch white oak with no bevels or gaps to interrupt flow. “It’s a dark stain, but muted, so it doesn’t fight with the kitchen island or the Congo

built-ins throughout,” says Mario.

Luxe Manor Designs Inc. helped the family with interior options throughout the design process. The family room’s one-of-a-kind feature wall follows the curve of the entranceway staircase on the other side of the wall. Its white oak panels are stained toffee. Custom millwork and cabinetry seamlessly tie the space to the kitchen. Here, modern furniture was introduced. A modular grey linen sectional on chrome legs is paired with a glass coffee table, its base a sizeable tree root. Both items are from **Mobilia**.

In the living room, the standout focal point is the fireplace surround. One-inch thick slabs of Moscovita Oro quartzite, quarried in Brazil, stretch to the ceiling. They were chosen for the dramatic black, brown and grey veining. The backlit surround is a breathtaking feature at night. *Continued on page 22*





Upstairs, the design for the master suite is unique. Rather than a separate space, built-in custom wardrobes line the hallway that leads to the bedroom area. French doors provide a view of the beautiful backyard oasis. Along the opposite wall from the bed, a panel in the wall unit cleverly opens to reveal the en suite. “I wanted softness in the en suite, few straight lines, nothing too modern, but with glam,” says Samira. “We customized the layout, playing with materials, shapes, textures and colours, including the mushroom stain on cabinets,” says Cristina. Here again, Invictus White tile delivers movement. “People try to bookmatch things, but we like random,” says Mario. “It’s exciting. You never know what you’ll get until it’s done.” The polished floor-to-ceiling tile adds a mirrored glam factor. “The Italian chrome towel warmers are room jewelry, they dress things up,” laughs Cristina. Rubinet fixtures are inset with Swarovski crystals. “I had to have a little ‘girl’ in this room,” Samira laughs. White cantilevered Il Bagno Alessi toilet and bidet, designed by Keramik Laufen, present a touch of mushroom in the light, taking their cue from the room’s grey tones. *Continued on page 24*

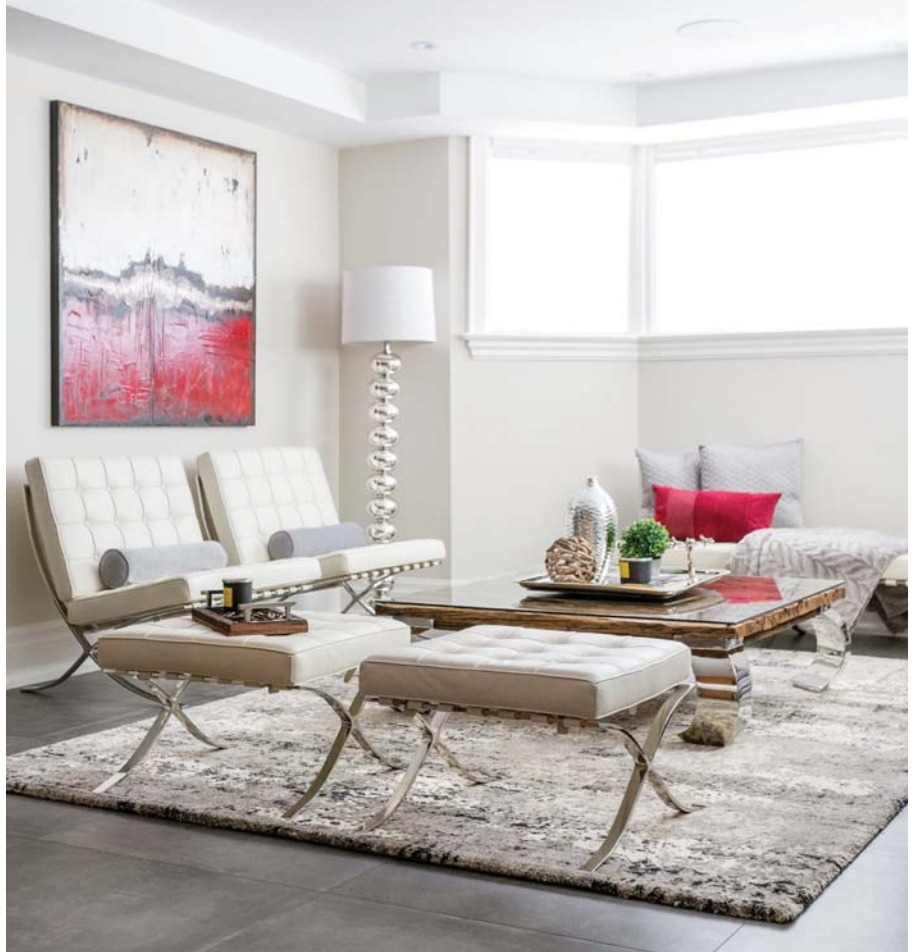


TOP LEFT: Custom wardrobes lead the way into the bright master bedroom. **LEFT:** The en suite exudes tranquility with soothing grey, white and mushroom tones. **ABOVE:** A hidden door, crafted to look like part of the built-in wall unit, opens to reveal the master en suite.

feature

There's a lot of wow in this house, including the nightclub atmosphere of the lower level. "This area is me," says Mario. "I love the design." It features a Quarzo Bianco waterfall bar sourced from **Crystal Tile & Marble Ltd.** "The material is difficult to work with, particularly cut on a 45-degree angle. Not everyone can do it; so I asked Crystal Tile," says Mario. LED lighting that changes colour was sealed into the quartzite with bulbs that last 18,000 hours. "We can have a ladies' night or a men's night, depending on the colour," laughs Samira.

While Mario's style is a little traditional, Samira likes a contemporary vibe. The build achieved parity with the couple's individual personalities. What's the difference between building for you and building for your clients? "I built this house for us," says Mario. "It suits us. However, when I do a home for clients, I want to bring their personalities to life." As a custom builder with his own very talented tradespeople, his expertise is guiding clients to achieve their own unique vision. And he's very successful at it. **OH**



TOP: A chic sitting area easily extends evening entertaining in comfort. **FAR LEFT:** LED lighting in the quartzite bar is an entertainer's delight. **LEFT:** Crafted with untreated African mahogany, handcrafted arches and peaks lend the feel of a cellar in an Italian vineyard. **ABOVE:** The sound-proofed home theatre with 140 inch screen and rear projection system was installed by H2 Systems Inc.